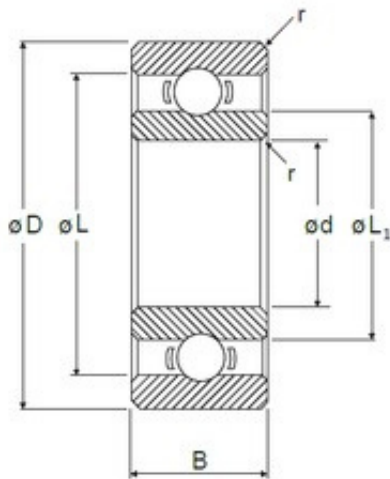


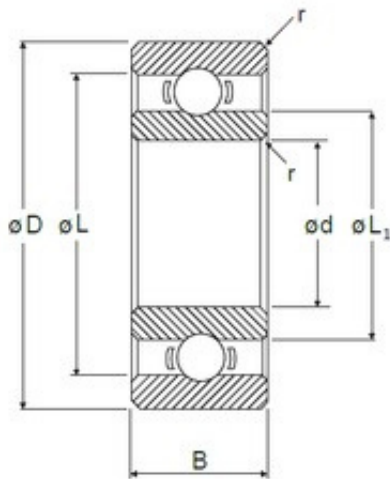
Bearing No. D/W SRI-1038

D	15.875 mm
d	9.525 mm
B	3.967 mm
Size (mm)	15.875x9.525x3.967
Width (mm)	3,967
d1	11.25 mm
D1	13.6 mm
D2	14.2 mm
Bearing number	D/W SRI-1038
Limiting speed	56000 r/min
Reference speed	85000 r/min
Bore Diameter (mm)	15,875
Outer Diameter (mm)	9,525
da - min.	11.2 mm
Da - max.	14.3 mm
ra - max.	0.4 mm
r1,2 - min.	0.4 mm
Basic dynamic load rating - C	0.488 kN
Fatigue load limit - Pu	0.009 kN
Calculation factor - kr	0.015
Calculation factor - f0	8
Basic static load rating - C0	0.22 kN



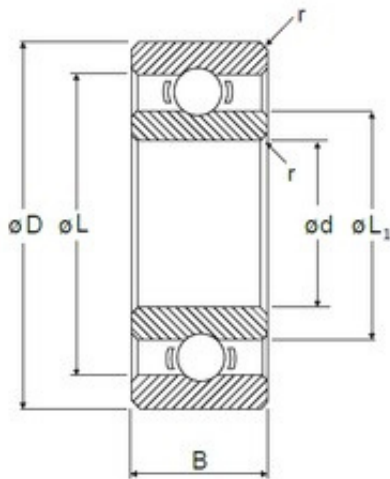
Bearing No. RI-814

D	12,7 mm
d	6,35 mm
B	3,175 mm
C	3,175 mm
L	0,432 mm
L1	0,33 mm
r min.	0,13 mm
Size (mm)	6.35x12.7x3.175
Width (mm)	3,175
Bearing number	RI-814
Bore Diameter (mm)	6,35
Outer Diameter (mm)	12,7
Basic dynamic load rating (C)	0,828 kN



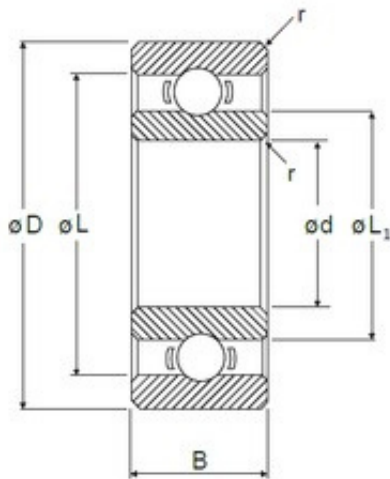
Bearing No. RI-618

D	9,525 mm
d	3,175 mm
B	2,779 mm
C	2,779 mm
L	0,271 mm
L1	0,173 mm
r min.	0,13 mm
Size (mm)	3.175x9.525x2.779
Width (mm)	2,779
Bearing number	RI-618
Bore Diameter (mm)	3,175
Outer Diameter (mm)	9,525
Basic dynamic load rating (C)	0,563 kN



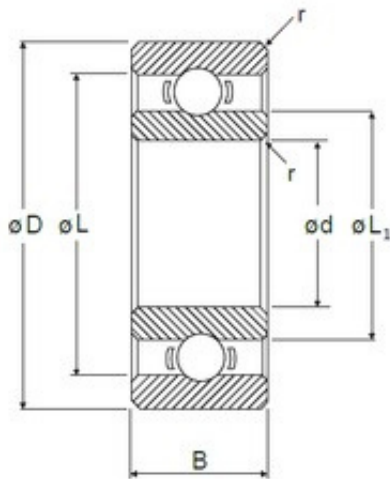
Bearing No. RI-614

D	9,525 mm
d	6,35 mm
B	3,175 mm
C	3,175 mm
L	0,34 mm
L1	0,285 mm
r min.	0,08 mm
Size (mm)	6.35x9.525x3.175
Width (mm)	3,175
Bearing number	RI-614
Bore Diameter (mm)	6,35
Outer Diameter (mm)	9,525
Basic dynamic load rating (C)	0,417 kN



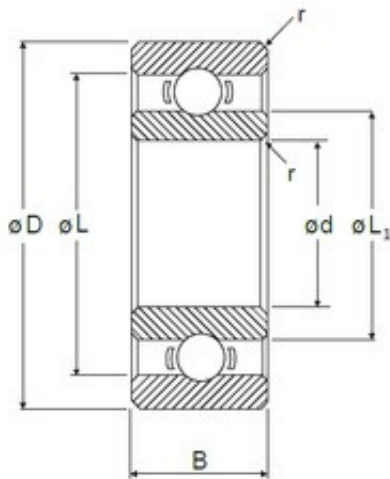
Bearing No. RI-518

D	7,938 mm
d	3,175 mm
B	2,779 mm
C	2,779 mm
L	0,271 mm
L1	0,173 mm
r min.	0,08 mm
Size (mm)	3.175x7.938x2.779
Width (mm)	2,779
Bearing number	RI-518
Bore Diameter (mm)	3,175
Outer Diameter (mm)	7,938
Basic dynamic load rating (C)	0,563 kN



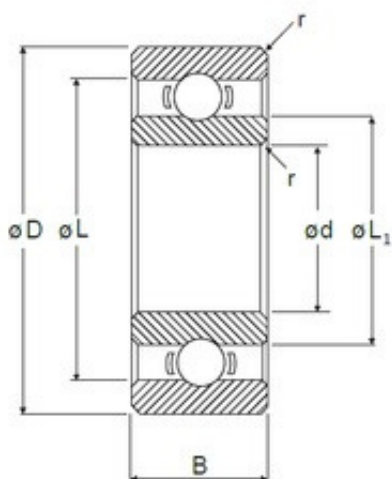
Bearing No. RI-418

D	6,35 mm
d	3,175 mm
B	2,38 mm
C	2,38 mm
L	0,217 mm
L1	0,161 mm
r min.	0,08 mm
Size (mm)	3.175x6.35x2.38
Width (mm)	2,38
Bearing number	RI-418
Bore Diameter (mm)	3,175
Outer Diameter (mm)	6,35
Basic dynamic load rating (C)	0,285 kN



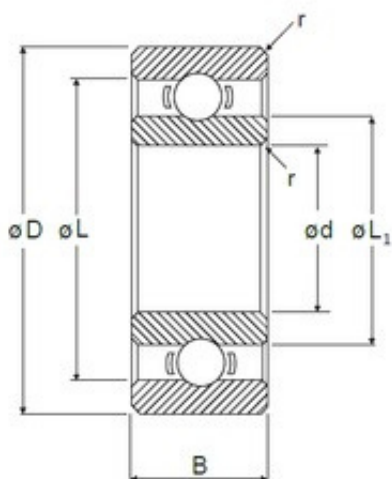
Bearing No. RI-5

D	7,938 mm
d	2,38 mm
B	2,779 mm
C	2,779 mm
L	0,271 mm
L1	0,173 mm
r min.	0,08 mm
Size (mm)	2.38x7.938x2.779
Width (mm)	2,779
Bearing number	RI-5
Bore Diameter (mm)	2,38
Outer Diameter (mm)	7,938
Basic dynamic load rating (C)	0,563 kN



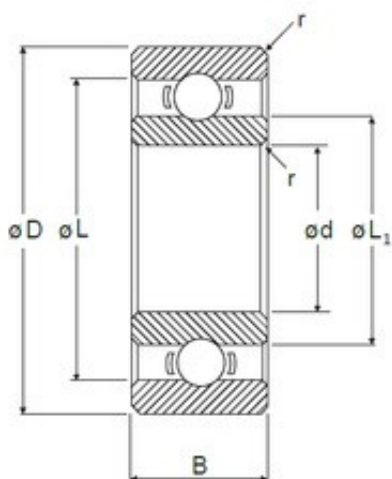
Bearing No. RI-4

D	6,35 mm
d	1,984 mm
B	2,38 mm
C	2,38 mm
L	0,193 mm
L1	0,122 mm
r min.	0,08 mm
Size (mm)	1.984x6.35x2.38
Width (mm)	2,38
Bearing number	RI-4
Bore Diameter (mm)	1,984
Outer Diameter (mm)	6,35
Basic dynamic load rating (C)	0,33 kN



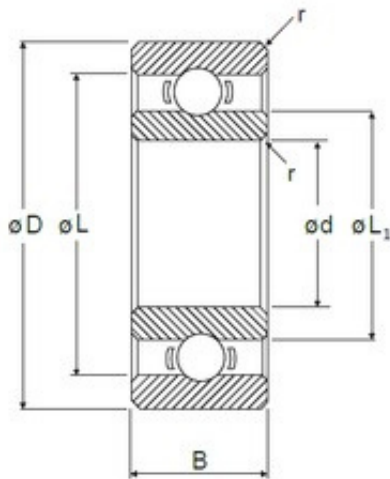
Bearing No. RI-3

D	4,762 mm
d	1,397 mm
B	1,984 mm
C	1,984 mm
L	0,158 mm
L1	0,093 mm
r min.	0,08 mm
Size (mm)	1.397x4.762x1.984
Width (mm)	1,984
Bearing number	RI-3
Bore Diameter (mm)	1,397
Outer Diameter (mm)	4,762
Basic dynamic load rating (C)	0,264 kN



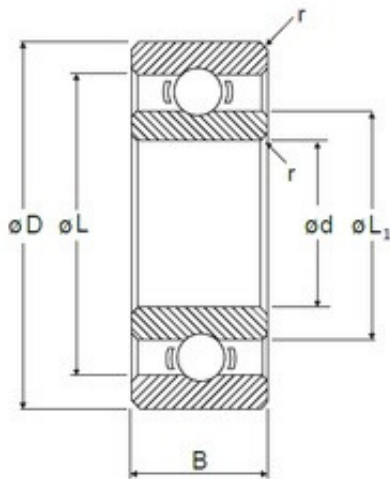
Bearing No. RI-21/2

D	3,967 mm
d	1,191 mm
B	1,588 mm
C	1,588 mm
L	0,124 mm
L1	0,081 mm
r min.	0,08 mm
Size (mm)	1.191x3.967x1.588
Width (mm)	1,588
Bearing number	RI-21/2
Bore Diameter (mm)	1,191
Outer Diameter (mm)	3,967
Basic dynamic load rating (C)	0,158 kN



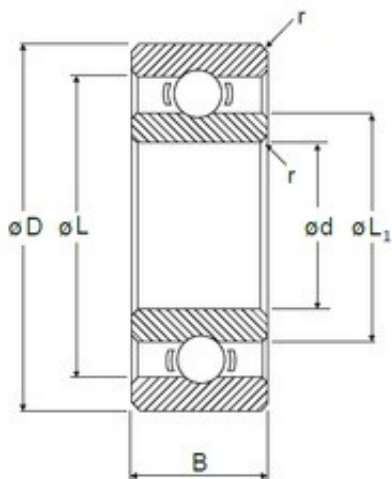
Bearing No. R-4

D	15,875 mm
d	6,35 mm
B	4,978 mm
C	4,978 mm
L	0,513 mm
L1	0,323 mm
r min.	0,3 mm
Size (mm)	6.35x15.875x4.978
Width (mm)	4,978
Bearing number	R-4
Bore Diameter (mm)	6,35
Outer Diameter (mm)	15,875
Basic dynamic load rating (C)	1,47 kN



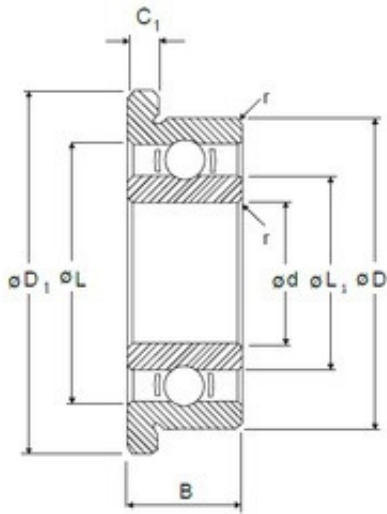
Bearing No. R-3

D	12,7 mm
d	4,762 mm
B	3,967 mm
C	3,967 mm
L	0,413 mm
L1	0,276 mm
r min.	0,3 mm
Size (mm)	4.762x12.7x3.967
Width (mm)	3,967
Bearing number	R-3
Bore Diameter (mm)	4,762
Outer Diameter (mm)	12,7
Basic dynamic load rating (C)	1,306 kN



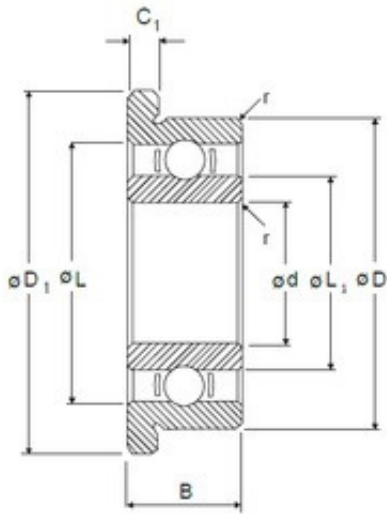
Bearing No. R-2

D	9,525 mm
d	3,175 mm
B	3,967 mm
C	3,967 mm
L	0,301 mm
L1	0,2 mm
r min.	0,3 mm
Size (mm)	3.175x9.525x3.967
Width (mm)	3,967
Bearing number	R-2
Bore Diameter (mm)	3,175
Outer Diameter (mm)	9,525
Basic dynamic load rating (C)	0,641 kN



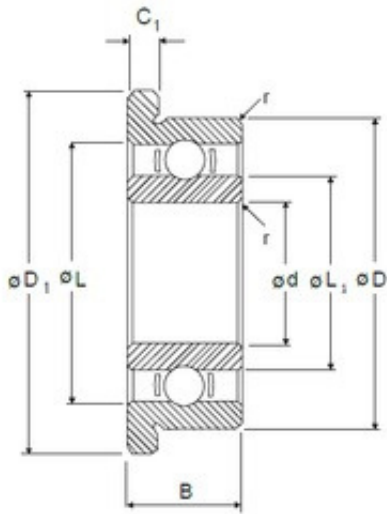
Bearing No. RIF-814

D	12,7 mm
d	6,35 mm
B	3,175 mm
C	3,175 mm
L	0,432 mm
C1	0,58 mm
D1	13,89 mm
L1	0,33 mm
r min.	0,13 mm
Size (mm)	6.35x12.7x3.175
Width (mm)	3,175
Bearing number	RIF-814
Bore Diameter (mm)	6,35
Outer Diameter (mm)	12,7
Basic dynamic load rating (C)	0,828 kN



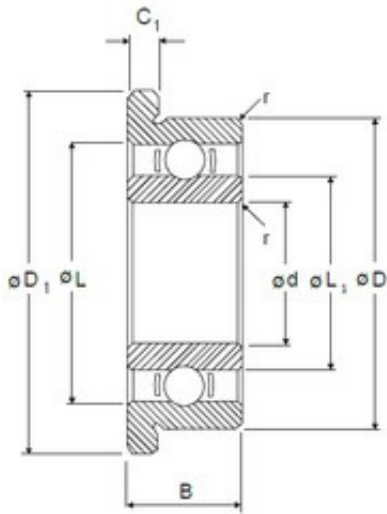
Bearing No. RIF-618

D	9,525 mm
d	3,175 mm
B	2,779 mm
C	2,779 mm
L	0,271 mm
C1	0,58 mm
D1	10,72 mm
L1	0,173 mm
r min.	0,13 mm
Size (mm)	3.175x9.525x2.779
Width (mm)	2,779
Bearing number	RIF-618
Bore Diameter (mm)	3,175
Outer Diameter (mm)	9,525
Basic dynamic load rating (C)	0,563 kN



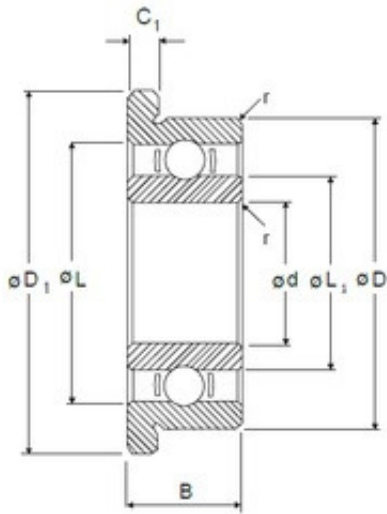
Bearing No. RIF-614

D	9,525 mm
d	6,35 mm
B	3,175 mm
C	3,175 mm
L	0,34 mm
C1	0,58 mm
D1	10,72 mm
L1	0,285 mm
r min.	0,08 mm
Size (mm)	6.35x9.525x3.175
Width (mm)	3,175
Bearing number	RIF-614
Bore Diameter (mm)	6,35
Outer Diameter (mm)	9,525
Basic dynamic load rating (C)	0,417 kN



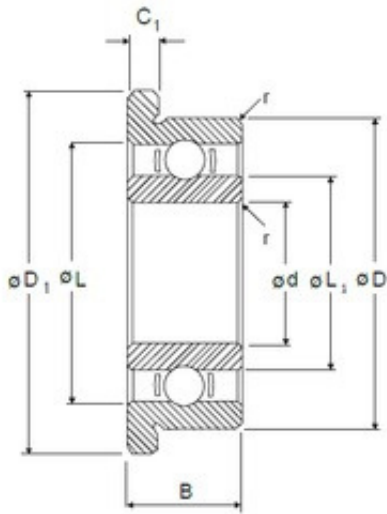
Bearing No. RIF-518

D	7,938 mm
d	3,175 mm
B	2,779 mm
C	2,779 mm
L	0,271 mm
C1	0,58 mm
D1	9,12 mm
L1	0,173 mm
r min.	0,08 mm
Size (mm)	3.175x7.938x2.779
Width (mm)	2,779
Bearing number	RIF-518
Bore Diameter (mm)	3,175
Outer Diameter (mm)	7,938
Basic dynamic load rating (C)	0,563 kN



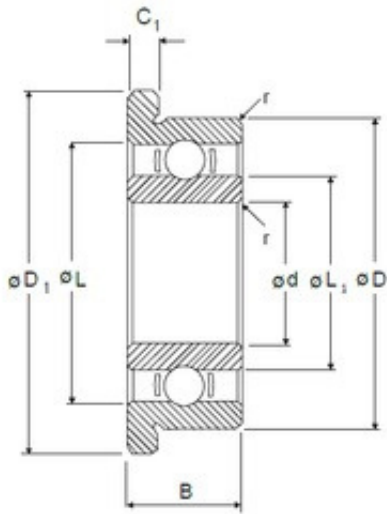
Bearing No. RIF-418

D	6,35 mm
d	3,175 mm
B	2,38 mm
C	2,38 mm
L	0,217 mm
C1	0,58 mm
D1	7,52 mm
L1	0,161 mm
r min.	0,08 mm
Size (mm)	3.175x6.35x2.38
Width (mm)	2,38
Bearing number	RIF-418
Bore Diameter (mm)	3,175
Outer Diameter (mm)	6,35
Basic dynamic load rating (C)	0,285 kN



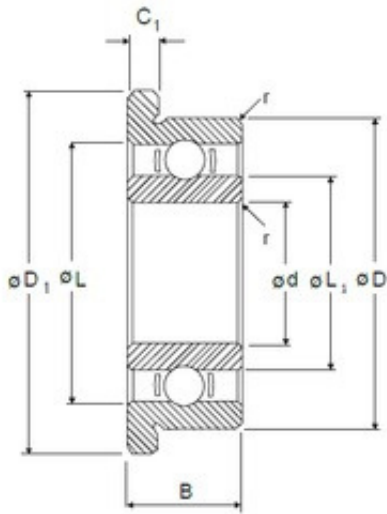
Bearing No. RIF-5

D	7,938 mm
d	2,38 mm
B	2,779 mm
C	2,779 mm
L	0,271 mm
C1	0,58 mm
D1	9,12 mm
L1	0,173 mm
r min.	0,08 mm
Size (mm)	2.38x7.938x2.779
Width (mm)	2,779
Bearing number	RIF-5
Bore Diameter (mm)	2,38
Outer Diameter (mm)	7,938
Basic dynamic load rating (C)	0,563 kN



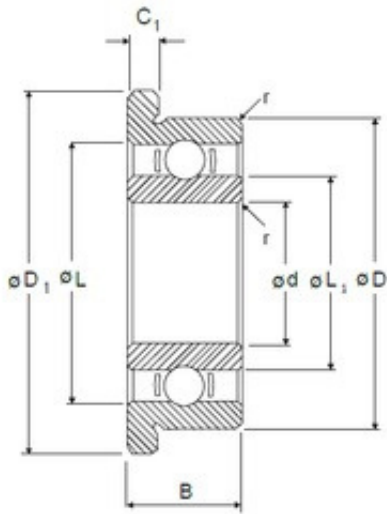
Bearing No. RIF-4

D	6,35 mm
d	1,984 mm
B	2,38 mm
C	2,38 mm
L	0,193 mm
C1	0,58 mm
D1	7,52 mm
L1	0,122 mm
r min.	0,08 mm
Size (mm)	1.984x6.35x2.38
Width (mm)	2,38
Bearing number	RIF-4
Bore Diameter (mm)	1,984
Outer Diameter (mm)	6,35
Basic dynamic load rating (C)	0,33 kN



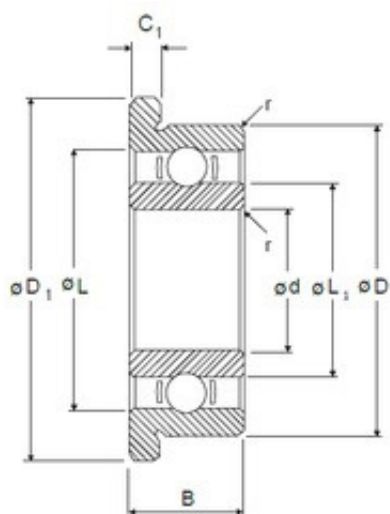
Bearing No. RIF-3

D	4,762 mm
d	1,397 mm
B	1,984 mm
C	1,984 mm
L	0,158 mm
C1	0,58 mm
D1	5,94 mm
L1	0,093 mm
r min.	0,08 mm
Size (mm)	1.397x4.762x1.984
Width (mm)	1,984
Bearing number	RIF-3
Bore Diameter (mm)	1,397
Outer Diameter (mm)	4,762
Basic dynamic load rating (C)	0,264 kN



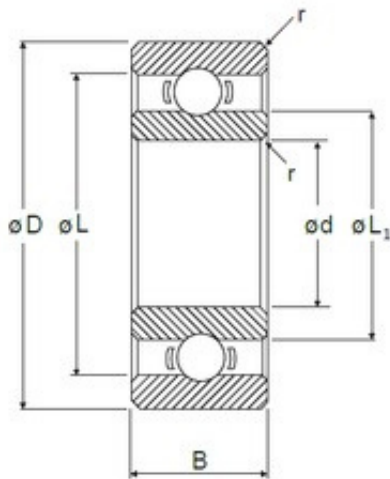
Bearing No. RIF-21/2

D	3,967 mm
d	1,191 mm
B	1,588 mm
C	1,588 mm
L	0,124 mm
C1	0,33 mm
D1	5,16 mm
L1	0,081 mm
r min.	0,08 mm
Size (mm)	1.191x3.967x1.588
Width (mm)	1,588
Bearing number	RIF-21/2
Bore Diameter (mm)	1,191
Outer Diameter (mm)	3,967
Basic dynamic load rating (C)	0,158 kN



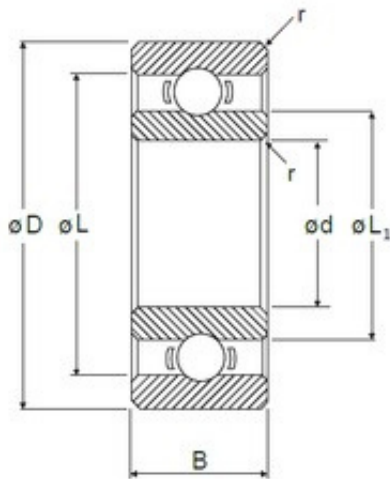
Bearing No. RF-2

D	9,525 mm
d	3,175 mm
B	3,967 mm
C	3,967 mm
L	0,301 mm
C1	0,76 mm
D1	11,18 mm
L1	0,2 mm
r min.	0,3 mm
Size (mm)	3.175x9.525x3.967
Width (mm)	3,967
Bearing number	RF-2
Bore Diameter (mm)	3,175
Outer Diameter (mm)	9,525
Basic dynamic load rating (C)	0,641 kN



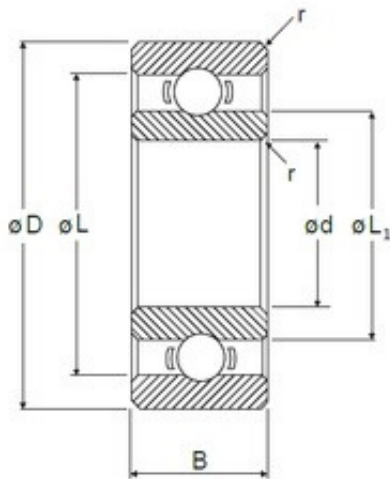
Bearing No. L-1910

D	19 mm
d	10 mm
B	5 mm
C	5 mm
L	16,71 mm
L1	12,32 mm
r min.	0,3 mm
Size (mm)	10x19x5
Width (mm)	5
Bearing number	L-1910
Bore Diameter (mm)	10
Outer Diameter (mm)	19
Basic dynamic load rating (C)	2,123 kN



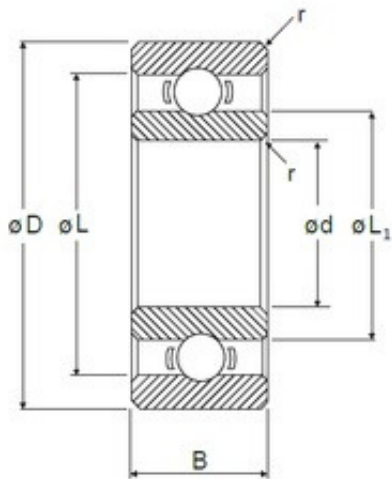
Bearing No. L-1790

D	17 mm
d	9 mm
B	4 mm
C	4 mm
L	14,84 mm
L1	11,2 mm
r min.	0,2 mm
Size (mm)	9x17x4
Width (mm)	4
Bearing number	L-1790
Bore Diameter (mm)	9
Outer Diameter (mm)	17
Basic dynamic load rating (C)	1,724 kN



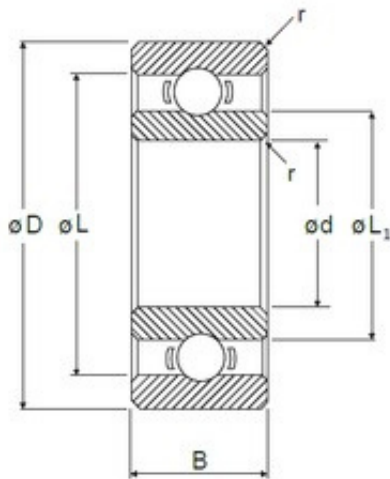
Bearing No. L-1680

D	16 mm
d	8 mm
B	4 mm
C	4 mm
L	13,4 mm
L1	10,3 mm
r min.	0,2 mm
Size (mm)	8x16x4
Width (mm)	4
Bearing number	L-1680
Bore Diameter (mm)	8
Outer Diameter (mm)	16
Basic dynamic load rating (C)	1,606 kN



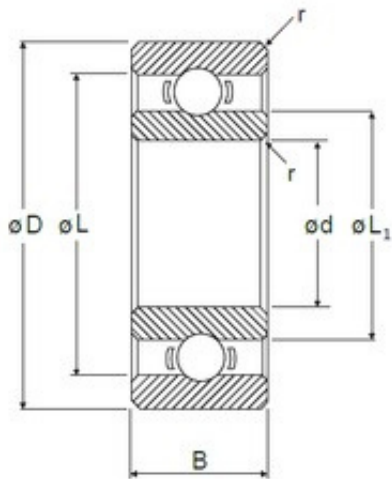
Bearing No. L-1480

D	14 mm
d	8 mm
B	3,5 mm
C	3,5 mm
L	12,13 mm
L1	9,9 mm
r min.	0,15 mm
Size (mm)	8x14x3.5
Width (mm)	3,5
Bearing number	L-1480
Bore Diameter (mm)	8
Outer Diameter (mm)	14
Basic dynamic load rating (C)	0,819 kN



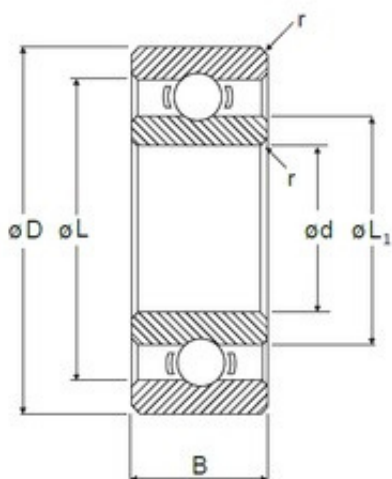
Bearing No. L-1470

D	14 mm
d	7 mm
B	3,5 mm
C	3,5 mm
L	12,03 mm
L1	9 mm
r min.	0,15 mm
Size (mm)	7x14x3.5
Width (mm)	3,5
Bearing number	L-1470
Bore Diameter (mm)	7
Outer Diameter (mm)	14
Basic dynamic load rating (C)	1,175 kN



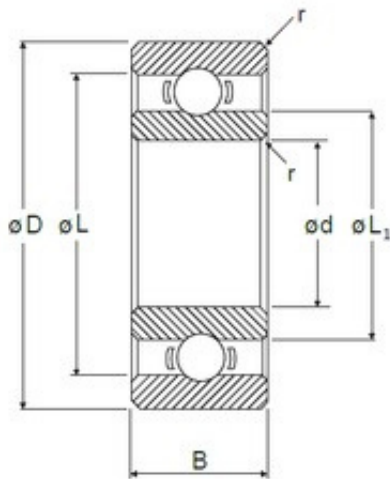
Bearing No. L-1370

D	13 mm
d	7 mm
B	3 mm
C	3 mm
L	11,13 mm
L1	8,9 mm
r min.	0,15 mm
Size (mm)	7x13x3
Width (mm)	3
Bearing number	L-1370
Bore Diameter (mm)	7
Outer Diameter (mm)	13
Basic dynamic load rating (C)	0,88 kN



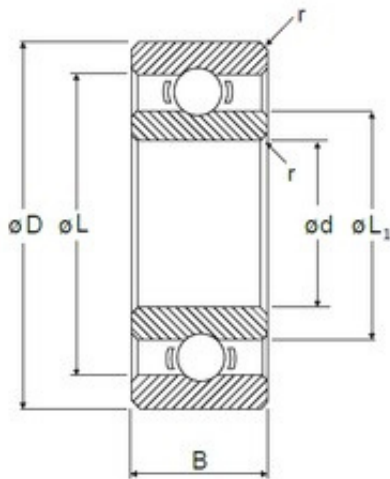
Bearing No. L-1360

D	13 mm
d	6 mm
B	3,5 mm
C	3,5 mm
L	10,98 mm
L1	8 mm
r min.	0,15 mm
Size (mm)	6x13x3.5
Width (mm)	3,5
Bearing number	L-1360
Bore Diameter (mm)	6
Outer Diameter (mm)	13
Basic dynamic load rating (C)	1,083 kN



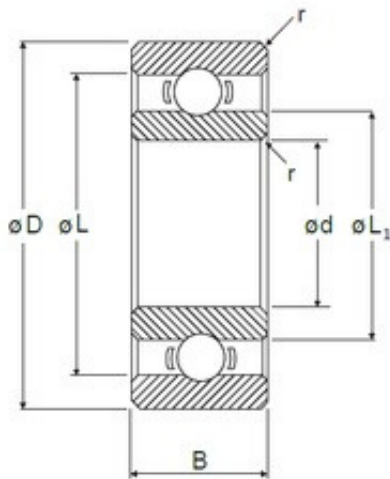
Bearing No. L-1280

D	12 mm
d	8 mm
B	2,5 mm
C	2,5 mm
L	10,93 mm
L1	9,1 mm
r min.	0,1 mm
Size (mm)	8x12x2.5
Width (mm)	2,5
Bearing number	L-1280
Bore Diameter (mm)	8
Outer Diameter (mm)	12
Basic dynamic load rating (C)	0,506 kN



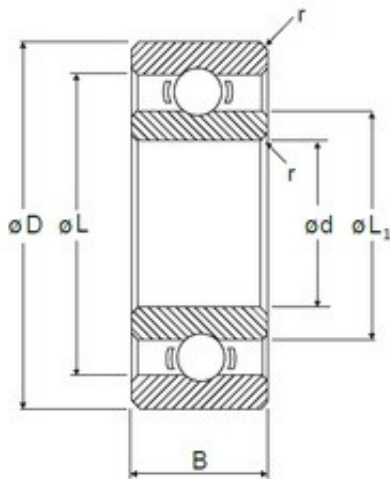
Bearing No. L-1260

D	12 mm
d	6 mm
B	3 mm
C	3 mm
L	9,94 mm
L1	7,7 mm
r min.	0,15 mm
Size (mm)	6x12x3
Width (mm)	3
Bearing number	L-1260
Bore Diameter (mm)	6
Outer Diameter (mm)	12
Basic dynamic load rating (C)	0,831 kN



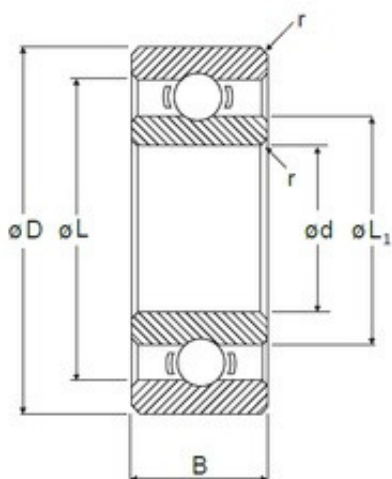
Bearing No. L-1170

D	11 mm
d	7 mm
B	2,5 mm
C	2,5 mm
L	9,83 mm
L1	8,1 mm
r min.	0,1 mm
Size (mm)	7x11x2.5
Width (mm)	2,5
Bearing number	L-1170
Bore Diameter (mm)	7
Outer Diameter (mm)	11
Basic dynamic load rating (C)	0,449 kN



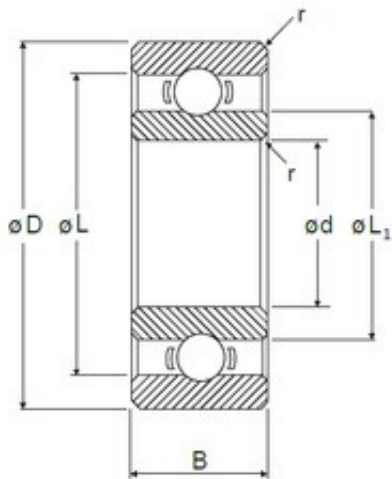
Bearing No. L-1150

D	11 mm
d	5 mm
B	3 mm
C	3 mm
L	8,63 mm
L1	6,4 mm
r min.	0,15 mm
Size (mm)	5x11x3
Width (mm)	3
Bearing number	L-1150
Bore Diameter (mm)	5
Outer Diameter (mm)	11
Basic dynamic load rating (C)	0,714 kN



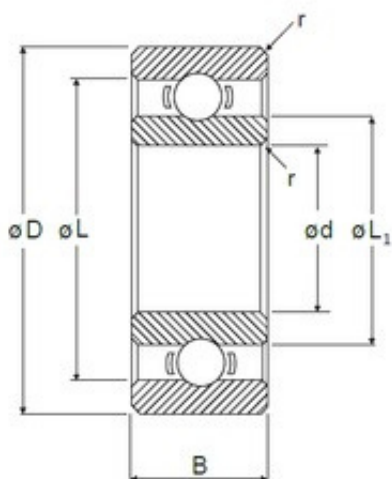
Bearing No. L-1050

D	10 mm
d	5 mm
B	3 mm
C	3 mm
L	8,63 mm
L1	6,4 mm
r min.	0,1 mm
Size (mm)	5x10x3
Width (mm)	3
Bearing number	L-1050
Bore Diameter (mm)	5
Outer Diameter (mm)	10
Basic dynamic load rating (C)	0,714 kN



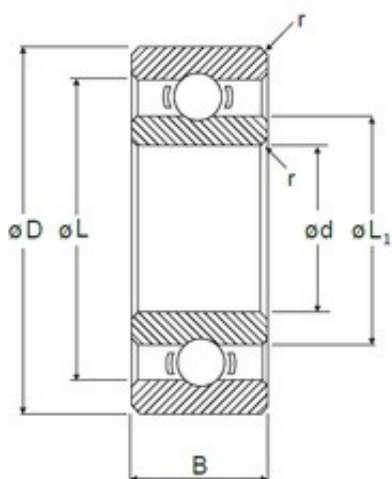
Bearing No. L-850

D	8 mm
d	5 mm
B	2 mm
C	2 mm
L	6,95 mm
L1	5,8 mm
r min.	0,08 mm
Size (mm)	5x8x2
Width (mm)	2
Bearing number	L-850
Bore Diameter (mm)	5
Outer Diameter (mm)	8
Basic dynamic load rating (C)	0,274 kN



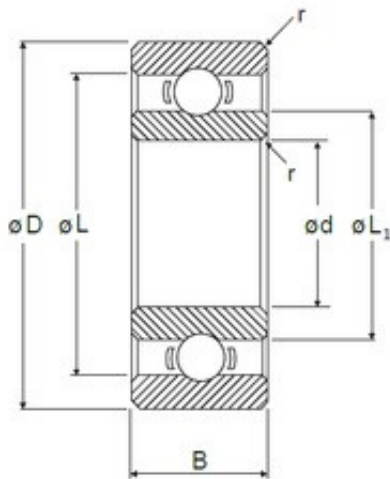
Bearing No. L-950

D	9 mm
d	5 mm
B	2,5 mm
C	2,5 mm
L	7,73 mm
L1	6 mm
r min.	0,1 mm
Size (mm)	5x9x2.5
Width (mm)	2,5
Bearing number	L-950
Bore Diameter (mm)	5
Outer Diameter (mm)	9
Basic dynamic load rating (C)	0,495 kN



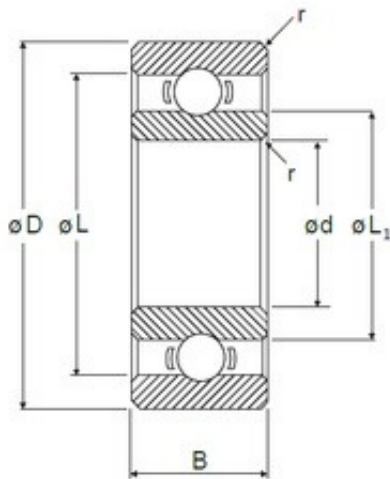
Bearing No. R-1350

D	13 mm
d	5 mm
B	4 mm
C	4 mm
L	11,14 mm
L1	6,66 mm
r min.	0,2 mm
Size (mm)	5x13x4
Width (mm)	4
Bearing number	R-1350
Bore Diameter (mm)	5
Outer Diameter (mm)	13
Basic dynamic load rating (C)	1,074 kN



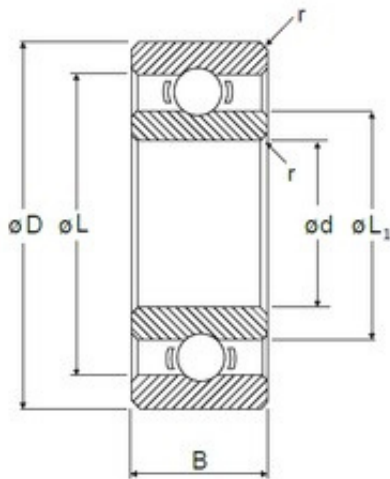
Bearing No. R-1240

D	12 mm
d	4 mm
B	4 mm
C	4 mm
L	9,99 mm
L1	5,62 mm
r min.	0,2 mm
Size (mm)	4x12x4
Width (mm)	4
Bearing number	R-1240
Bore Diameter (mm)	4
Outer Diameter (mm)	12
Basic dynamic load rating (C)	0,959 kN



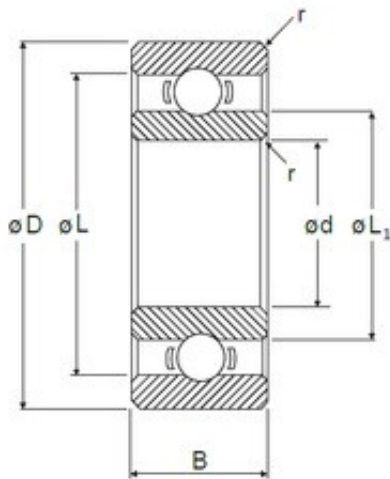
Bearing No. R-1340

D	13 mm
d	4 mm
B	5 mm
C	5 mm
L	11,22 mm
L1	5,97 mm
r min.	0,2 mm
Size (mm)	4x13x5
Width (mm)	5
Bearing number	R-1340
Bore Diameter (mm)	4
Outer Diameter (mm)	13
Basic dynamic load rating (C)	1,306 kN



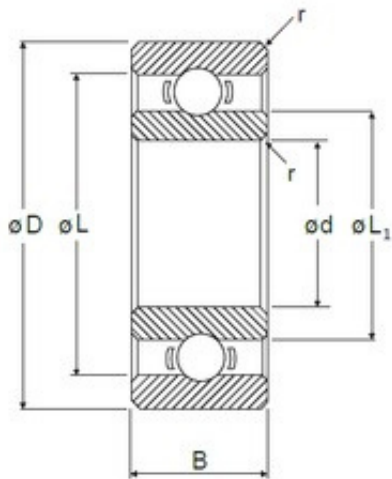
Bearing No. R-1140

D	11 mm
d	4 mm
B	4 mm
C	4 mm
L	9,54 mm
L1	6,4 mm
r min.	0,15 mm
Size (mm)	4x11x4
Width (mm)	4
Bearing number	R-1140
Bore Diameter (mm)	4
Outer Diameter (mm)	11
Basic dynamic load rating (C)	0,714 kN



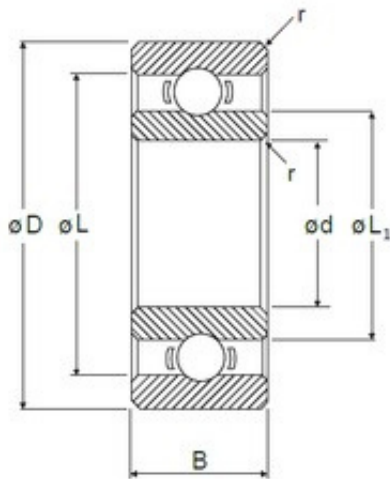
Bearing No. R-1030

D	10 mm
d	3 mm
B	4 mm
C	4 mm
L	8,2 mm
L1	5,08 mm
r min.	0,15 mm
Size (mm)	3x10x4
Width (mm)	4
Bearing number	R-1030
Bore Diameter (mm)	3
Outer Diameter (mm)	10
Basic dynamic load rating (C)	0,641 kN



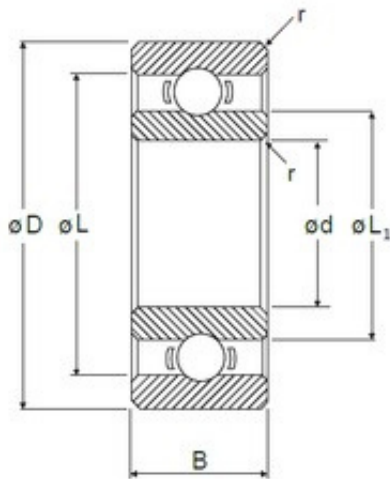
Bearing No. R-930

D	9 mm
d	3 mm
B	3 mm
C	3 mm
L	7,23 mm
L1	4,8 mm
r min.	0,15 mm
Size (mm)	3x9x3
Width (mm)	3
Bearing number	R-930
Bore Diameter (mm)	3
Outer Diameter (mm)	9
Basic dynamic load rating (C)	0,634 kN



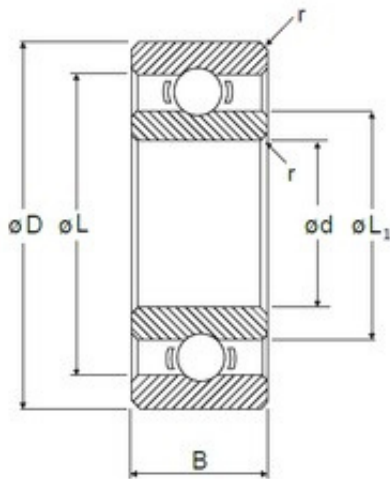
Bearing No. R-830

D	8 mm
d	3 mm
B	3 mm
C	3 mm
L	6,53 mm
L1	4,1 mm
r min.	0,15 mm
Size (mm)	3x8x3
Width (mm)	3
Bearing number	R-830
Bore Diameter (mm)	3
Outer Diameter (mm)	8
Basic dynamic load rating (C)	0,553 kN



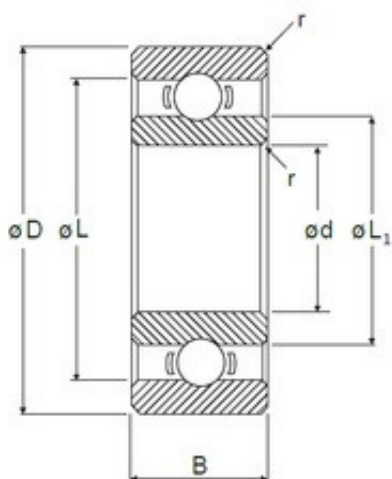
Bearing No. R-825

D	8 mm
d	2,5 mm
B	2,8 mm
C	2,8 mm
L	6,53 mm
L1	4,1 mm
r min.	0,15 mm
Size (mm)	2.5x8x2.8
Width (mm)	2,8
Bearing number	R-825
Bore Diameter (mm)	2,5
Outer Diameter (mm)	8
Basic dynamic load rating (C)	0,553 kN



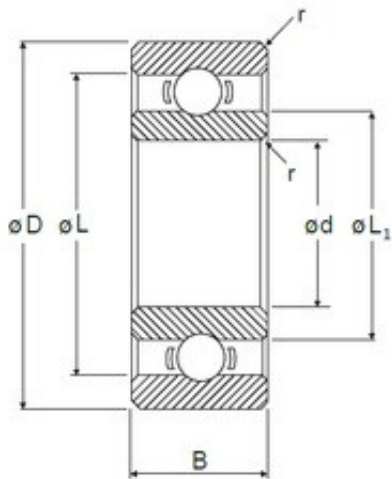
Bearing No. R-725

D	7 mm
d	2,5 mm
B	2,5 mm
C	2,5 mm
L	5,52 mm
L1	3,8 mm
r min.	0,15 mm
Size (mm)	2.5x7x2.5
Width (mm)	2,5
Bearing number	R-725
Bore Diameter (mm)	2,5
Outer Diameter (mm)	7
Basic dynamic load rating (C)	0,38 kN



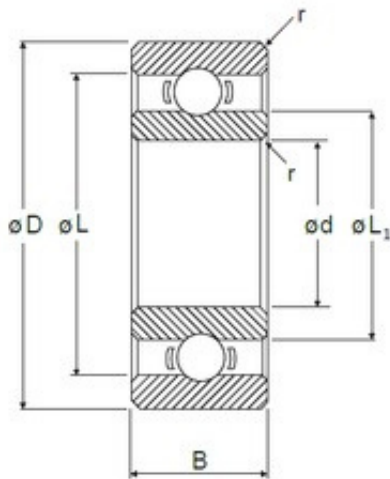
Bearing No. R-620

D	6 mm
d	2 mm
B	2,3 mm
C	2,3 mm
L	4,78 mm
L1	3,16 mm
r min.	0,15 mm
Size (mm)	2x6x2.3
Width (mm)	2,3
Bearing number	R-620
Bore Diameter (mm)	2
Outer Diameter (mm)	6
Basic dynamic load rating (C)	0,279 kN



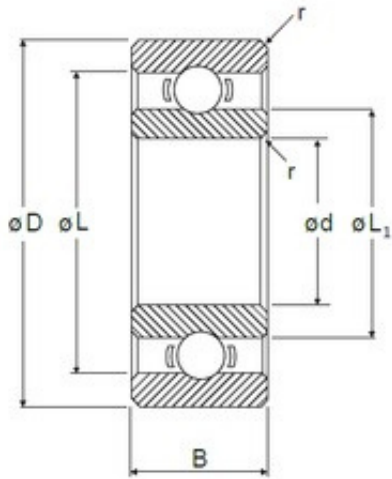
Bearing No. R-720

D	7 mm
d	2 mm
B	2,8 mm
C	2,8 mm
L	5,52 mm
L1	3,8 mm
r min.	0,15 mm
Size (mm)	2x7x2.8
Width (mm)	2,8
Bearing number	R-720
Bore Diameter (mm)	2
Outer Diameter (mm)	7
Basic dynamic load rating (C)	0,38 kN



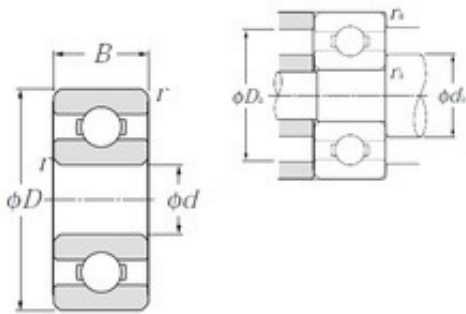
Bearing No. R-615

D	6 mm
d	1,5 mm
B	2,5 mm
C	2,5 mm
L	4,73 mm
L1	2,9 mm
r min.	0,15 mm
Size (mm)	1.5x6x2.5
Width (mm)	2,5
Bearing number	R-615
Bore Diameter (mm)	1,5
Outer Diameter (mm)	6
Basic dynamic load rating (C)	0,324 kN



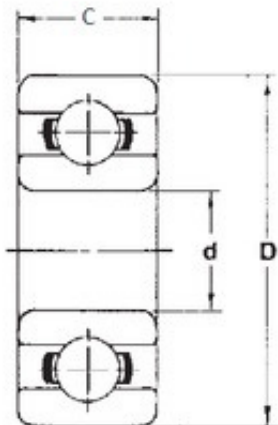
Bearing No. R-515

D	5 mm
d	1,5 mm
B	2 mm
C	2 mm
L	3,73 mm
L1	2,6 mm
r min.	0,15 mm
Size (mm)	1.5x5x2
Width (mm)	2
Bearing number	R-515
Bore Diameter (mm)	1,5
Outer Diameter (mm)	5
Basic dynamic load rating (C)	0,184 kN



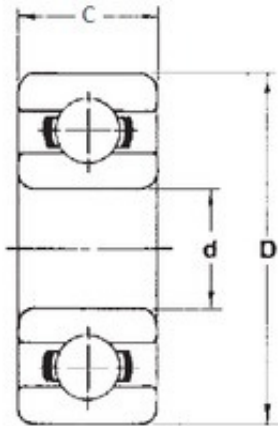
Bearing No. 693

D	8 mm
d	3 mm
B	3 mm
C	3 mm
r min.	0,15 mm
Weight	0,61 Kg
da max	4,4 mm
Da max.	6,8 mm
ra max.	0,15 mm
da min.	4,2 mm
Size (mm)	3x8x3
Width (mm)	3
Bearing number	693
Bore Diameter (mm)	3
Outer Diameter (mm)	8
(Oil) Lubrication Speed	63 000 r/min
(Grease) Lubrication Speed	54 000 r/min
Basic dynamic load rating (C)	0,56 kN
Basic static load rating (C0)	0,18 kN



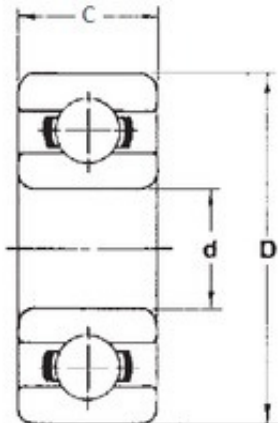
Bearing No. 687

D	14 mm
d	7 mm
B	3,5 mm
C	3,5 mm
Weight	0,00203 Kg
Size (mm)	7x14x3.5
Width (mm)	3,5
Bearing number	687
Bore Diameter (mm)	7
Outer Diameter (mm)	14
(Grease) Lubrication Speed	40000 r/min
Basic dynamic load rating (C)	1,177 kN
Basic static load rating (C0)	0,51 kN



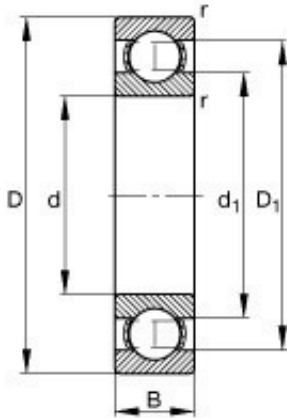
Bearing No. 685

D	11 mm
d	5 mm
B	3 mm
C	3 mm
Weight	0,00116 Kg
Size (mm)	5x11x3
Width (mm)	3
Bearing number	685
Bore Diameter (mm)	5
Outer Diameter (mm)	11
(Grease) Lubrication Speed	45000 r/min
Basic dynamic load rating (C)	0,716 kN
Basic static load rating (C0)	0,294 kN



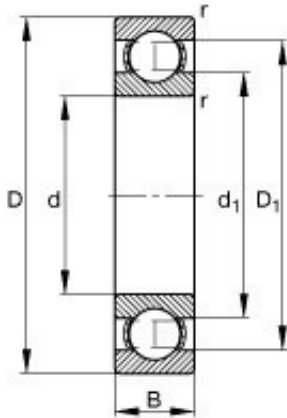
Bearing No. 684

D	9 mm
d	4 mm
B	2,5 mm
C	2,5 mm
Weight	0,00065 Kg
Size (mm)	4x9x2.5
Width (mm)	2,5
Bearing number	684
Bore Diameter (mm)	4
Outer Diameter (mm)	9
(Grease) Lubrication Speed	53000 r/min
Basic dynamic load rating (C)	0,638 kN
Basic static load rating (C0)	0,226 kN



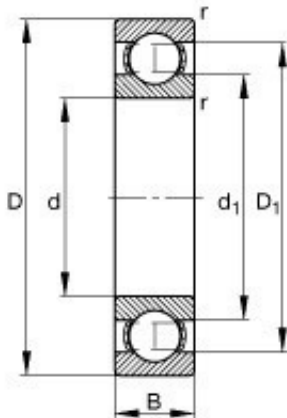
Bearing No. 634

m	0,0060 kg / Weight
d	4 mm
D	16 mm
B	5 mm
Size (mm)	4x16x5
Width (mm)	5
d1	8,5 mm
nB	35000 1/min / Reference speed
nG	63000 1/min / Limiting speed
D1	12,5 mm
Cr	2030 N / Dynamic load rating (radial)
C0r	700 N / Static load rating (radial)
Bearing number	634
Cur	36 N / Fatigue limit load, radial
rmin	0,3 mm
ra max	0,3 mm
da min	6,4 mm
Da max	13,6 mm
Bore Diameter (mm)	4
Outer Diameter (mm)	16



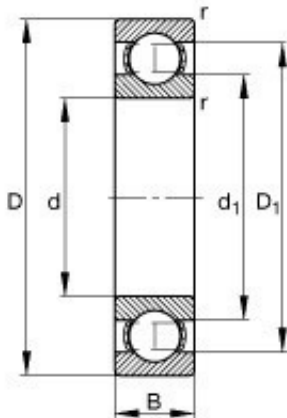
Bearing No. 635

m	0,0080 kg / Weight
d	5 mm
D	19 mm
B	6 mm
Size (mm)	5x19x6
Width (mm)	6
d1	10,8 mm
nB	31500 1/min / Reference speed
nG	53000 1/min / Limiting speed
D1	15,5 mm
Cr	2600 N / Dynamic load rating (radial)
C0r	1040 N / Static load rating (radial)
Bearing number	635
Cur	53 N / Fatigue limit load, radial
rmin	0,3 mm
ra max	0,3 mm
da min	7,4 mm
Da max	16,6 mm
Bore Diameter (mm)	5
Outer Diameter (mm)	19



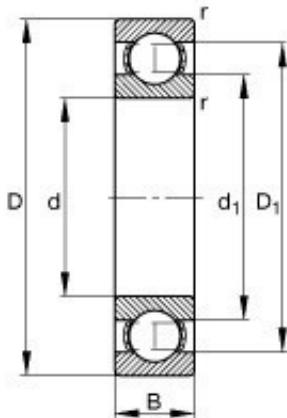
Bearing No. 625

m	0,0050 kg / Weight
d	5 mm
D	16 mm
B	5 mm
Size (mm)	5x16x5
Width (mm)	5
d1	8,5 mm
nB	36500 1/min / Reference speed
nG	63000 1/min / Limiting speed
D1	12,5 mm
Cr	1560 N / Dynamic load rating (radial)
C0r	600 N / Static load rating (radial)
Bearing number	625
Cur	30,5 N / Fatigue limit load, radial
rmin	0,3 mm
ra max	0,3 mm
da min	7,4 mm
Da max	13,6 mm
Bore Diameter (mm)	5
Outer Diameter (mm)	16



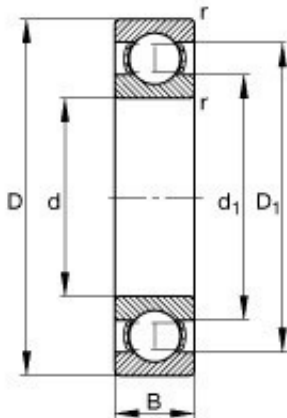
Bearing No. 626

m	0,0080 kg / Weight
d	6 mm
D	19 mm
B	6 mm
Size (mm)	6x19x6
Width (mm)	6
d1	10,6 mm
nB	32500 1/min / Reference speed
nG	53000 1/min / Limiting speed
D1	15,5 mm
Cr	2600 N / Dynamic load rating (radial)
C0r	1050 N / Static load rating (radial)
Bearing number	626
Cur	53 N / Fatigue limit load, radial
rmin	0,3 mm
ra max	0,3 mm
da min	8,4 mm
Da max	16,6 mm
Bore Diameter (mm)	6
Outer Diameter (mm)	19



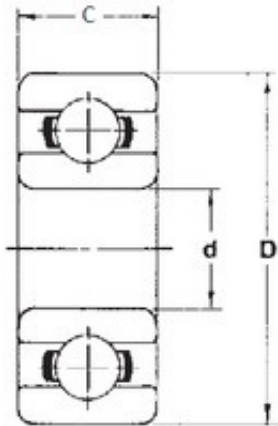
Bearing No. 623

m	0,0010 kg / Weight
d	3 mm
D	10 mm
B	4 mm
Size (mm)	3x10x4
Width (mm)	4
d1	5 mm
nB	57000 1/min / Reference speed
nG	94000 1/min / Limiting speed
D1	7,7 mm
Cr	670 N / Dynamic load rating (radial)
C0r	218 N / Static load rating (radial)
Bearing number	623
Cur	11,1 N / Fatigue limit load, radial
rmin	0,15 mm
ra max	0,15 mm
da min	4,4 mm
Da max	8,6 mm
Bore Diameter (mm)	3
Outer Diameter (mm)	10



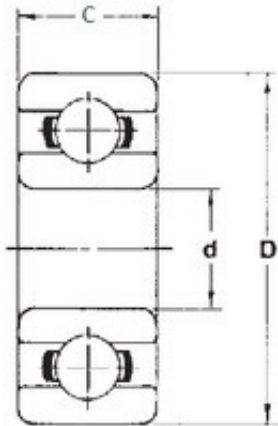
Bearing No. 624

m	0,0030 kg / Weight
d	4 mm
D	13 mm
B	5 mm
Size (mm)	4x13x5
Width (mm)	5
d1	7 mm
nB	46500 1/min / Reference speed
nG	72000 1/min / Limiting speed
D1	10,5 mm
Cr	1380 N / Dynamic load rating (radial)
C0r	485 N / Static load rating (radial)
Bearing number	624
Cur	24,6 N / Fatigue limit load, radial
rmin	0,2 mm
ra max	0,2 mm
da min	5,8 mm
Da max	11,2 mm
Bore Diameter (mm)	4
Outer Diameter (mm)	13



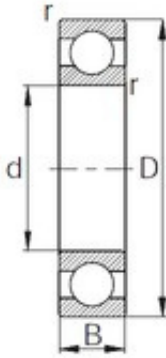
Bearing No. 605

D	14 mm
d	5 mm
B	5 mm
C	5 mm
Weight	0,00346 Kg
Size (mm)	5x14x5
Width (mm)	5
Bearing number	605
Bore Diameter (mm)	5
Outer Diameter (mm)	14
(Grease) Lubrication Speed	40000 r/min
Basic dynamic load rating (C)	1,334 kN
Basic static load rating (C0)	0,51 kN



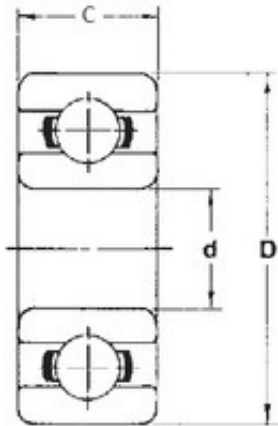
Bearing No. 606

D	17 mm
d	6 mm
B	6 mm
C	6 mm
Weight	0,00594 Kg
Size (mm)	6x17x6
Width (mm)	6
Bearing number	606
Bore Diameter (mm)	6
Outer Diameter (mm)	17
(Grease) Lubrication Speed	38000 r/min
Basic dynamic load rating (C)	2,266 kN
Basic static load rating (C0)	0,844 kN



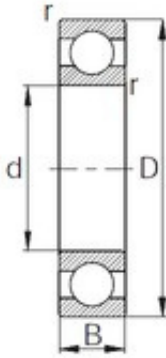
Bearing No. R24

D	66,675 mm
d	38,1 mm
B	11,112 mm
C	11,112 mm
r min.	1 mm
Weight	0,1384 Kg
Size (mm)	38.1x66.675x11.112
Width (mm)	11,112
Bearing number	R24
Bore Diameter (mm)	38,1
Outer Diameter (mm)	66,675
Basic dynamic load rating (C)	17,03 kN



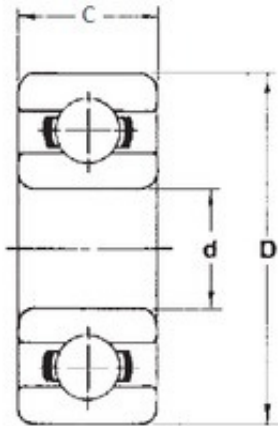
Bearing No. R22

D	63,5 mm
d	34,925 mm
B	11,112 mm
C	11,112 mm
Weight	0,12 Kg
Size (mm)	34.925x63.5x11.112
Width (mm)	11,112
Bearing number	R22
Bore Diameter (mm)	34,925
Outer Diameter (mm)	63,5
(Grease) Lubrication Speed	9000 r/min
Basic dynamic load rating (C)	14 kN
Basic static load rating (C0)	9,8 kN



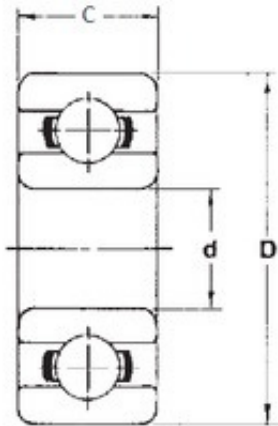
Bearing No. R18

D	53,975 mm
d	28,575 mm
B	9,525 mm
C	9,525 mm
r min.	0,6 mm
Weight	0,0847 Kg
Size (mm)	28.575x53.975x9.525
Width (mm)	9,525
Bearing number	R18
Bore Diameter (mm)	28,575
Outer Diameter (mm)	53,975
Basic dynamic load rating (C)	13,23 kN



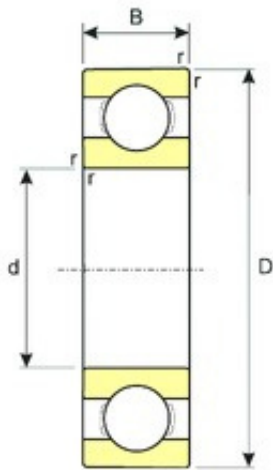
Bearing No. R16

D	50,8 mm
d	25,4 mm
B	9,525 mm
C	9,525 mm
Weight	0,085 Kg
Size (mm)	25.4x50.8x9.525
Width (mm)	9,525
Bearing number	R16
Bore Diameter (mm)	25,4
Outer Diameter (mm)	50,8
(Grease) Lubrication Speed	12000 r/min
Basic dynamic load rating (C)	10,2 kN
Basic static load rating (C0)	6,2 kN



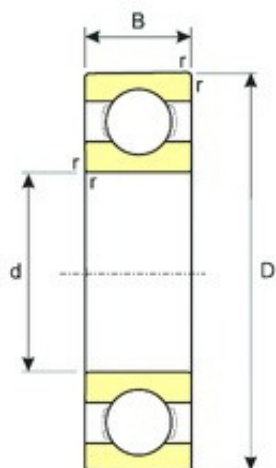
Bearing No. R14

D	47,625 mm
d	22,225 mm
B	9,252 mm
C	9,252 mm
Weight	0,071 Kg
Size (mm)	22.225x47.625x9.252
Width (mm)	9,252
Bearing number	R14
Bore Diameter (mm)	22,225
Outer Diameter (mm)	47,625
(Grease) Lubrication Speed	14000 r/min
Basic dynamic load rating (C)	9 kN
Basic static load rating (C0)	5,4 kN



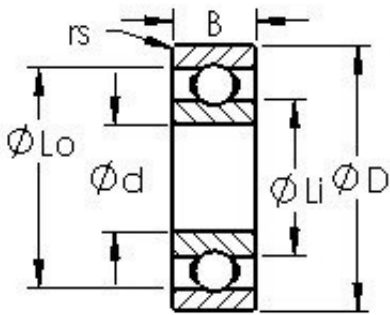
Bearing No. R12

D	41,275 mm
d	19.05 mm
B	7,937 mm
C	7,937 mm
r min.	0,8 mm
Size (mm)	19.05x41.275x7.937
Width (mm)	7,937
Bearing number	R12
Bore Diameter (mm)	19.05
Outer Diameter (mm)	41,275
Basic dynamic load rating (C)	8,49 kN



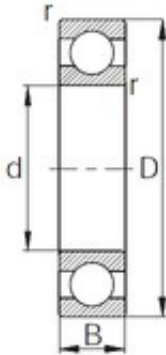
Bearing No. R10

D	34,925 mm
d	15,875 mm
B	7,142 mm
C	7,142 mm
r min.	0,8 mm
Size (mm)	15.875x34.925x7.142
Width (mm)	7,142
Bearing number	R10
Bore Diameter (mm)	15,875
Outer Diameter (mm)	34,925
Basic dynamic load rating (C)	4,65 kN



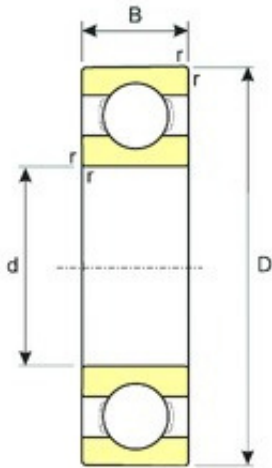
Bearing No. R8

Material	52100 Chrome steel (or equivalent)
Ball Qty	8
Precision	A1
Width (B)	0.2500
Width (mm)	6,35
Weight (g)	11.60
Bearing Type	Open
Bore Dia (d)	0.5000
Outer Dia (D)	1.1250
Ball Dia (Dw)	0.1875
Bearing number	R8
Radius (min) (rs)	0.016
Bore Diameter (mm)	12,7
Standard Clearance	C0
Outer Diameter (mm)	28,575
Dynamic Load Rating (Cr)	1,149
Static Load Rating (Cor)	511
Max Speed (Oil) (X1000 RPM)	32
Max Speed (Grease) (X1000 RPM)	27
Max. Shaft Shoulder Dia. Inner (Li)	0.7
Min. Housing Shoulder Dia., Outer (Lo)	0.9



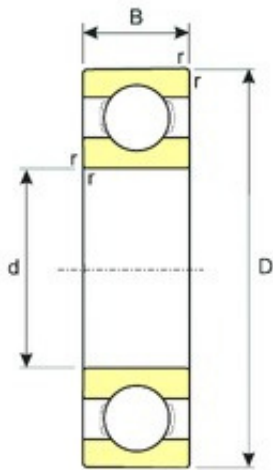
Bearing No. R6

D	22,225 mm
d	9,525 mm
B	5,558 mm
C	5,558 mm
r min.	0,3 mm
Weight	0,0096 Kg
Size (mm)	9.525x22.225x5.558
Width (mm)	5,558
Bearing number	R6
Bore Diameter (mm)	9,525
Outer Diameter (mm)	22,225
Basic dynamic load rating (C)	2,57 kN



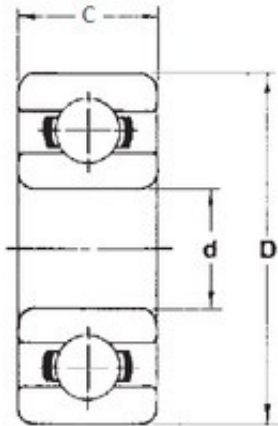
Bearing No. R4A

D	19,05 mm
d	6,35 mm
B	7,142 mm
C	7,142 mm
r min.	0,4 mm
Size (mm)	6.35x19.05x7.142
Width (mm)	7,142
Bearing number	R4A
Bore Diameter (mm)	6,35
Outer Diameter (mm)	19,05
Basic dynamic load rating (C)	1,82 kN



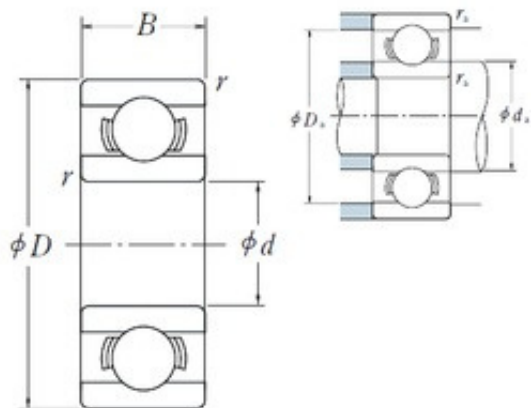
Bearing No. R4

D	15,875 mm
d	6,35 mm
B	4,978 mm
C	4,978 mm
r min.	0,3 mm
Size (mm)	6.35x15.875x4.978
Width (mm)	4,978
Bearing number	R4
Bore Diameter (mm)	6,35
Outer Diameter (mm)	15,875
Basic dynamic load rating (C)	1,14 kN



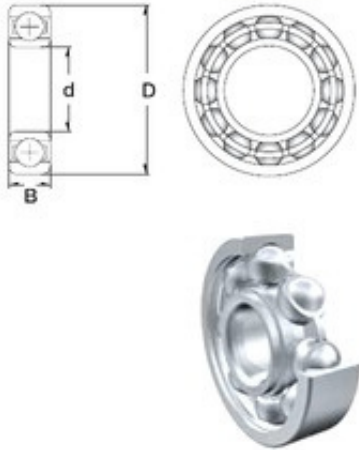
Bearing No. R3

D	12,7 mm
d	4,762 mm
B	3,967 mm
C	3,967 mm
Weight	0,00221 Kg
Size (mm)	4.762x12.7x3.967
Width (mm)	3,967
Bearing number	R3
Bore Diameter (mm)	4,762
Outer Diameter (mm)	12,7
(Grease) Lubrication Speed	43000 r/min
Basic dynamic load rating (C)	1,305 kN
Basic static load rating (C0)	0,491 kN



Bearing No. R2A

D	12,7 mm
d	3,175 mm
B	4,366 mm
C	4,366 mm
r min.	0,3 mm
Size (mm)	3.175x12.7x4.366
Width (mm)	4,366
Bearing number	R2A
Bore Diameter (mm)	3,175
Outer Diameter (mm)	12,7



Bearing No. R2

D	9,525 mm
d	3,175 mm
B	3,967 mm
C	3,967 mm
Size (mm)	3.175x9.525x3.967
Width (mm)	3,967
Bearing number	R2
Bore Diameter (mm)	3,175
Outer Diameter (mm)	9,525
(Grease) Lubrication Speed	56000 r/min
Basic dynamic load rating (C)	0,631 kN
Basic static load rating (C0)	0,219 kN